



**TITAN SOLAR**

---



**TITAN SOLAR**

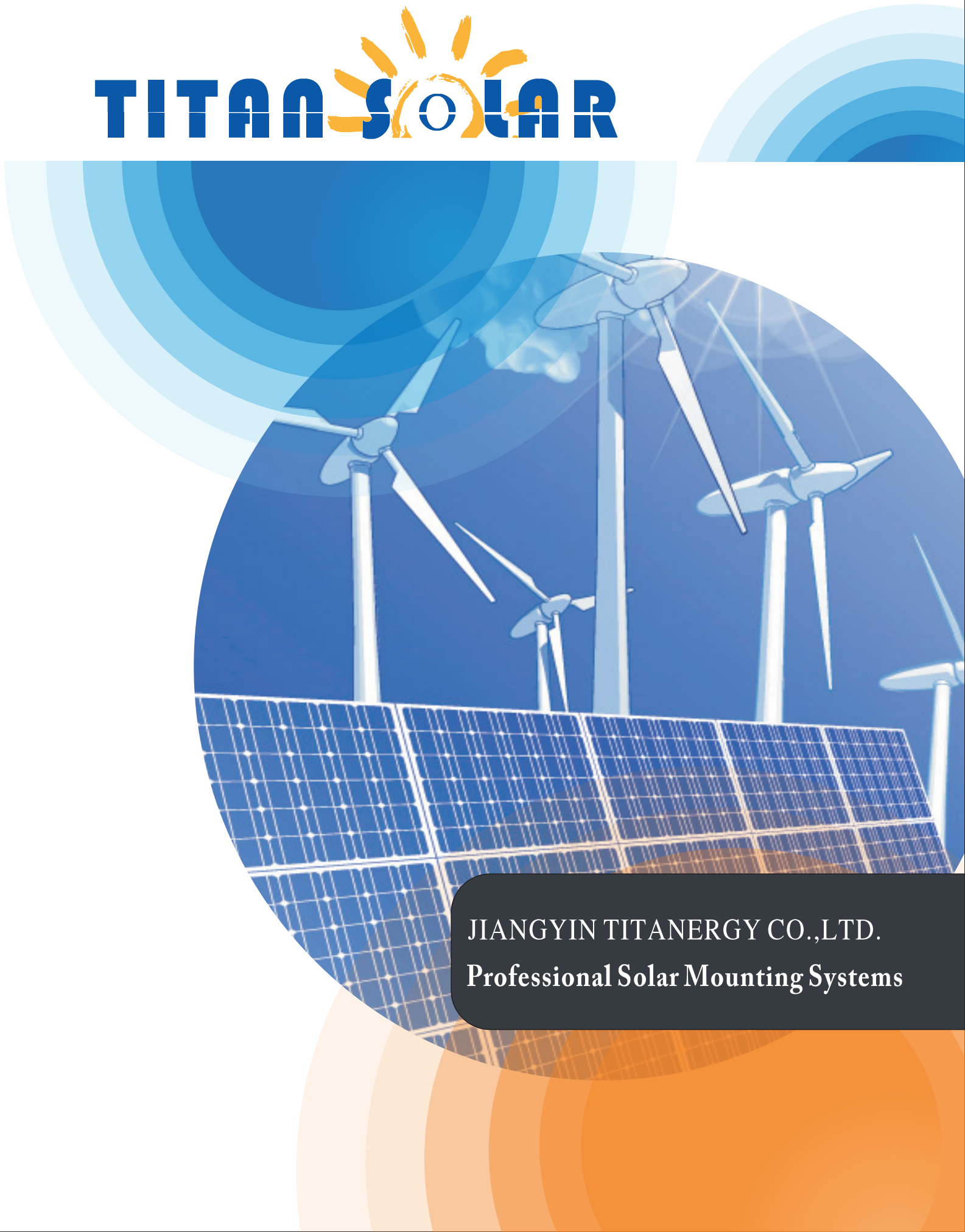
No.400,Chengyang Road,Yunting Street,Jiangyin,China

T:0086-510-86610879

F:0086-510-86610877

W:[www.titanenergy.com](http://www.titanenergy.com)

M:[info@titanenergy.com](mailto:info@titanenergy.com)



**JIANGYIN TITANERGY CO.,LTD.**  
**Professional Solar Mounting Systems**

# ABOUT TITAN SOLAR

Titan Solar devotes our expertise and resources into the research, design, manufacturing and distribution of quality PV mounting system solutions. Our products have been installed in Europe, Australia, Asia, Middle East, America, China, and so on, since it established.

## OUR CULTIVATE PROFESSIONALISM

Titan Solar cultivates professionalism and Innovation on product research and development to provide high quality standard assurance to customers with our professionalism, and create more value with our innovation.

## OUR MANAGEMENT

Titan Solar is a multinational organisation formed by highly experienced professionals within the solar photovoltaic manufacturing and installation industry. We apply stringent international manufacturing and management standards including but not limited to ISO9001: 2012, FMEA, MSA. International quality management systems in all phases of R&D, manufacturing, marketing and after-sales-service.

## OUR SERVICE NETWORKS

With our reliable products and short response time in our customer services, Titan Solar won trust from solar system integrators, installers and distributors world wide. Since our establishment, we have formed alliance with distribution partners world wide, and developed a highly professional sales and customer service team to offer our customer a global and efficient service network.



# CONTENT

|                                |    |
|--------------------------------|----|
| COMPONENTS                     | 01 |
| PITCHED ROOF RACKING SYSTEM    | 09 |
| FLAT ROOF RACKING SYSTEM       | 11 |
| BALLASTED MOUNTING SYSTEM      | 13 |
| AI-GROUND MOUNTING SYSTEM      | 14 |
| C-STEEL GROUND MOUNTING SYSTEM | 15 |
| PILE-GROUND MOUNTING SYSTEM    | 17 |
| POLE MOUNTING SYSTEM           | 18 |
| PROJECT CASES                  | 19 |



## RAILS

| Item No.      | Description      |
|---------------|------------------|
| TT-DR-Length  | TT Standard Rail |
| TT-DR1-Length | TT 1# Rail       |
| TT-DR2-Length | TT 2# Rail       |
| TT-DR3-Length | TT 3# Rail       |



**Note:**The standard length is 2560mm,3405mm, 4200mm.The other must be customized.  
**Material:**Anodized Al6005-T5  
**Color:**Natural silver or black anodized

## RAIL SPLICE KIT

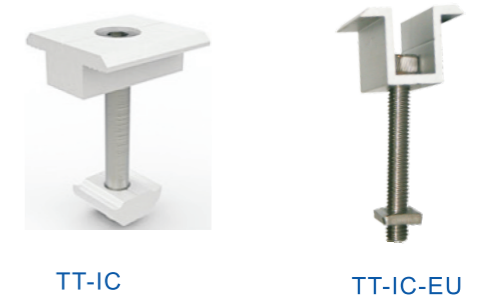
| Item No.  | Description           |
|-----------|-----------------------|
| TT-DR-SP  | TT Rail Splice Kit    |
| TT-DR2-SP | TT 2# Rail Splice Kit |
| TT-DR3-SP | TT 3# Rail Splice Kit |



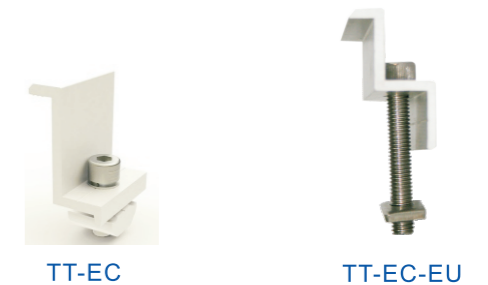
**Material:**Anodized Al6005-T5 and A2-70 Hexagon Socket Head Cap Screw  
**Color:**Natural silver or black anodized

## FRAMED MODULE CLAMP

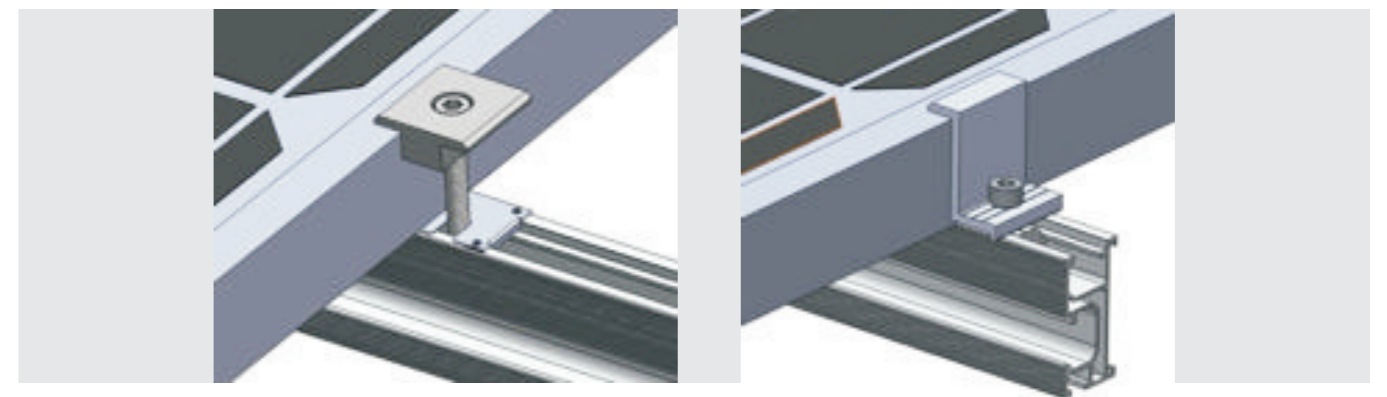
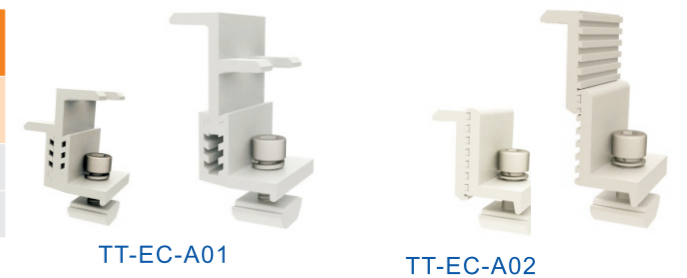
| Inter Clamp Kit |                            |
|-----------------|----------------------------|
| Item No.        | Description                |
| TT-IC-F30/35    | TT Inter Clamp Kit 30~35mm |
| TT-IC-F35/40    | TT Inter Clamp Kit 35~40mm |
| TT-IC-F45/50    | TT Inter Clamp Kit 45~50mm |
| TT-IC-F57/60    | TT Inter Clamp Kit 57~60mm |



| End Clamp Kit |                       |
|---------------|-----------------------|
| Item No.      | Description           |
| TT-EC-F30     | TT End Clamp Kit 30mm |
| TT-EC-F35     | TT End Clamp Kit 35mm |
| TT-EC-F40     | TT End Clamp Kit 40mm |
| TT-EC-F46     | TT End Clamp Kit 46mm |
| TT-EC-F50     | TT End Clamp Kit 50mm |
| TT-EC-F57     | TT End Clamp Kit 57mm |



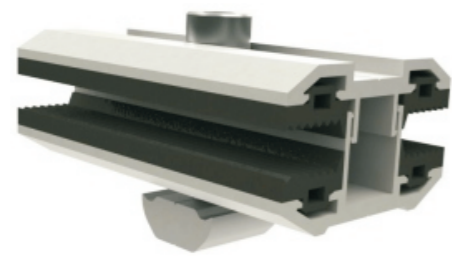
| Adjustable End Clamp Kit |                                |
|--------------------------|--------------------------------|
| Item No.                 | Description                    |
| TT-EC-A01                | TT Adjustable End Clamp Kit 1# |
| TT-EC-A02                | TT Adjustable End Clamp Kit 2# |



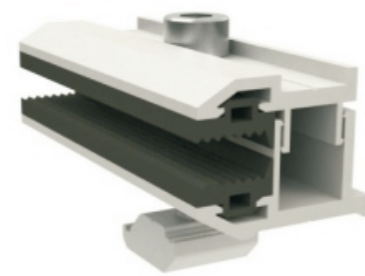
## FRAMELESS MODULE CLAMP



| Item No.         | Description                  |
|------------------|------------------------------|
| TT-IC-L60/80/120 | Thin Film Module Inter Clamp |
| TT-EC-L60/80/120 | Thin Film Module End Clamp   |



TT-IC-L80



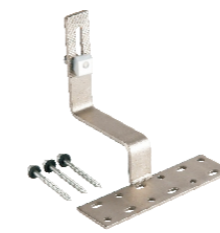
TT-EC-L80



## ROMANTILE ROOF HOOK

| Item No. | Description                       |
|----------|-----------------------------------|
| TT-IK-01 | Stainless Steel Hook 1# Kit       |
| TT-IK-03 | Stainless Steel Hook 3# Kit       |
| TT-IK-06 | Stainless Steel Hook 6# Kit       |
| TT-IK-08 | Stainless Steel Hook 8# Kit       |
| TT-IK-12 | Stainless Steel Hook 12# Kit      |
| TT-IK-14 | Stainless Steel Hook 14# Kit      |
| TT-IK-15 | Stainless Steel Hook 15# Kit      |
| TT-IK-16 | Stainless Steel Hook 16# Kit      |
| TT-IK-HP | Height Adjust Plate for Roof Hook |

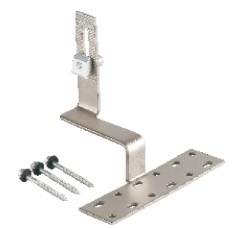
**Material:**Stainless Steel SUS304 and A2-70 Hexagon Socket Head Cap Screw



TT-IK-01



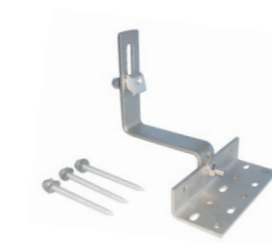
TT-IK-03



TT-IK-06



TT-IK-08



TT-IK-12



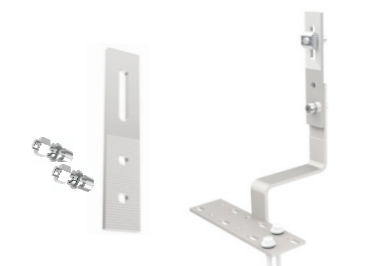
TT-IK-14



TT-IK-15



TT-IK-16

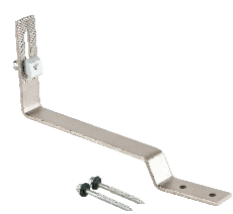


TT-IK-HP Adjust the Height

## FLAT TILE ROOF HOOK

| Item No.   | Description                    |
|------------|--------------------------------|
| TT-IK-02   | Stainless Steel Hook 2#        |
| TT-IK-02-A | Stainless Steel Hook 2# A type |
| TT-IK-02-B | Stainless Steel Hook 2# B type |

**Material:**Stainless Steel SUS304 and A2-70 Hexagon Socket Head Cap Screw



TT-IK-02



TT-IK-02-A



TT-IK-02-B

## SHINGLE TILE ROOF HOOK

| Item No.   | Description                    |
|------------|--------------------------------|
| TT-IK-04   | Stainless Steel Hook 4#        |
| TT-IK-04-A | Stainless Steel Hook 4# A type |
| TT-IK-04-B | Stainless Steel Hook 4# B type |
| TT-IK-13   | Stainless Steel Hook 13#       |

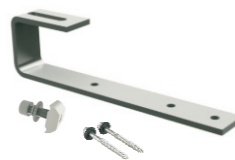
**Material:**Stainless Steel SUS304 and A2-70 Hexagon Socket Head Cap Screw



TT-IK-04



TT-IK-04-A



TT-IK-04-B



TT-IK-13

## TIN ROOF HOOK

| Item No.  | Description                   | Accessories                  |
|-----------|-------------------------------|------------------------------|
| TT-IK-05  | Aluminum Tin Interface Kit 5# | Wood Screw M6.3×80           |
| TT-IK-H01 | Hanger Bolt Hook 1#           | Hanger Bolt M10×200          |
| TT-IK-H04 | Hanger Bolt Hook 4#           | Hanger Bolt M10×200 & L Feet |
| TT-IK-H05 | Hanger Bolt Hook 5#           | Hanger Bolt M10×200          |

**Material:**Anodized Al6005-T5 and A2-70 Hexagon Socket Head Cap Screw



TT-IK-05



TT-IK-H01



TT-IK-H04



TT-IK-H05

## STANDING SEAM ROOF HOOK

| Item No.  | Description                | Roof Type                |
|-----------|----------------------------|--------------------------|
| TT-IK-S01 | Standing Seam Roof Hook 1# | Butler Roof              |
| TT-IK-S02 | Standing Seam Roof Hook 2# | KalZip-Bemo-roofs        |
| TT-IK-SK7 | Standing Seam Roof Hook K7 | Klip-Lok 406             |
| TT-IK-S07 | Standing Seam Roof Hook 7# | Klip-Lok 700 Hi-Strength |
| TT-IK-S05 | Standing Seam Roof Hook 5# | -----                    |
| TT-IK-S06 | Standing Seam Roof Hook 6# | -----                    |



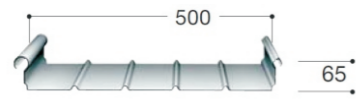
Butler-roof



TT-IK-S01



TT-IK-S02



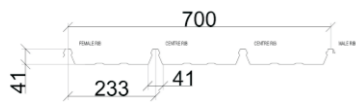
KalZip-roof



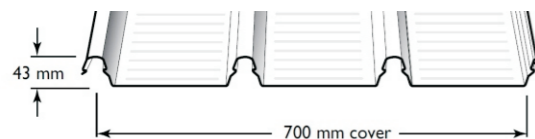
TT-IK-S07



TT-IK-SK7



Klip-lok 700



Klip-lok 700 Hi-Strength



TT-IK-S05



TT-IK-S06

## ACCESSORIES

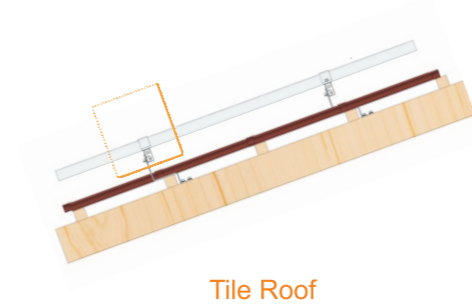
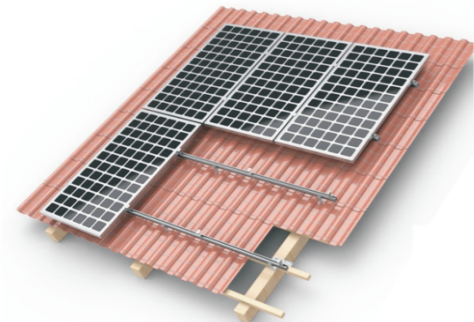
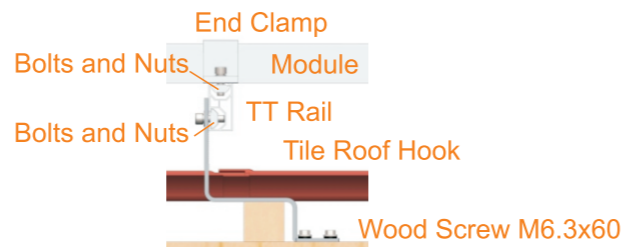
| Item No.   | Description      |
|------------|------------------|
| TT-DM-25   | Bolts & Nuts     |
| TT-A-DM    | D-Module         |
| TT-SSCC-01 | SS Cable Clip 1# |
| TT-SSCC-02 | SS Cable Clip 2# |
| TT-G-GC    | Grounding Clip   |
| TT-G-GL    | Grounding Lug    |
| TT-G-BJ    | Bonding Jumper   |



## Introduction

TT Pitched Roof Racking System is designed with great flexibility for both commercial and residential roof solar system. It is suitable for installing framed and frameless modules fixed to pitched roofs. TT product series have the innovated design of TT Rail and D module to make the installation easier and faster. Our highly customizable pre-assembled solutions can significantly reduce your installation time and cost.

## Tile Roof System



### Benefits

#### Easy Installation

D-module can be installed onto our TT Rail from any position. Systems can be pre-assembled at our factory to save your installtime on-site.

#### Flexibility and Compatible

TT Rail and its accessories can be installed with most type of solar panels under different conditions.

#### Safety and Reliability

The racking systems can withstand various weather conditions and are complied with the A1S/NZS 170 and other international structure load standards. The main support components have also been tested to guarantee its structural stability and weight and wind load capacities.

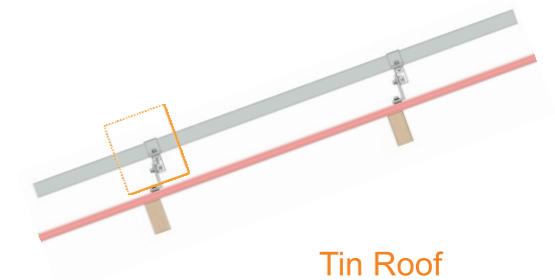
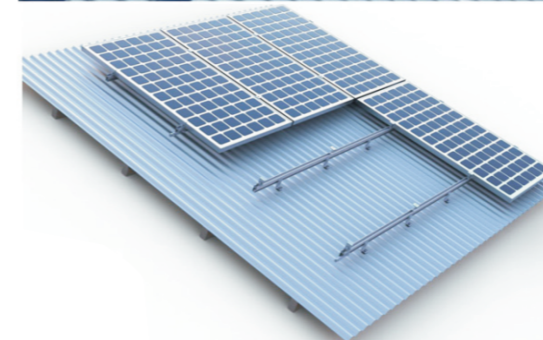
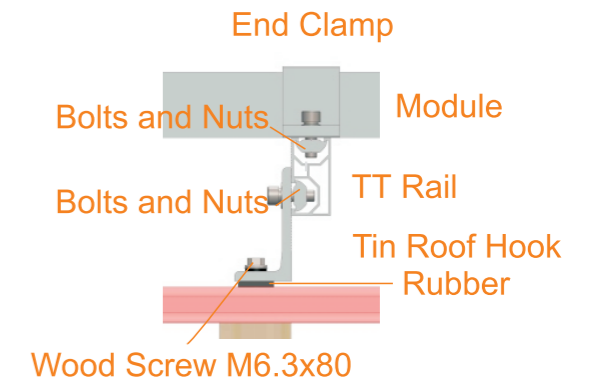
### Technical Information

|                 |                                    |
|-----------------|------------------------------------|
| Install Site    | Pitched Roof                       |
| Tilt Angle      | Flushed with the roof, up to 60deg |
| Building Height | up to 20m                          |
| Max Wind Speed  | up to 60m/s                        |
| Snow Load       | up to 1.4KN/m <sup>2</sup>         |
| Standards       | AS/NZS 1170 & DIN 1055 & Other     |
| Material        | Aluminum alloy & Stainless Steel   |
| Color           | Natural                            |
| Anti-corrosive  | Anodized                           |
| Warranty        | 10 years warranty                  |
| Duration        | More than 20 years                 |

## Introduction

TT Pitched Roof Racking System is designed with great flexibility for both commercial and residential roof solar system. It is suitable for installing framed and frameless modules fixed to pitched roofs. TT product series have the innovated design of TT Rail and D module to make the installation easier and faster. Our highly customizable pre-assembled solutions can significantly reduce your installation time and cost.

## Tin Roof System



### Benefits

#### Easy Installation

D-module can be installed onto our TT Rail from any position. Systems can be pre-assembled at our factory to save your installtime on-site.

#### Flexibility and Compatible

TT Rail and its accessories can be installed with most type of solar panels under different conditions.

#### Safety and Reliability

The racking systems can withstand various weather conditions and are complied with the A1S/NZS 170 and other international structure load standards. The main support components have also been tested to guarantee its structural stability and weight and wind load capacities.

### Technical Information

|                 |                                    |
|-----------------|------------------------------------|
| Install Site    | Pitched Roof                       |
| Tilt Angle      | Flushed with the roof, up to 60deg |
| Building Height | up to 20m                          |
| Max Wind Speed  | up to 60m/s                        |
| Snow Load       | up to 1.4KN/m <sup>2</sup>         |
| Standards       | AS/NZS 1170 & DIN 1055 & Other     |
| Material        | Aluminum alloy & Stainless Steel   |
| Color           | Natural                            |
| Anti-corrosive  | Anodized                           |
| Warranty        | 10 years warranty                  |
| Duration        | More than 20 years                 |

## Introduction

TT Flat Roof Racking system is developed to mount solar module in a certain tilt angle on a flat roof or ground. You can have the fixed or adjustable angle solution of 10-15deg, 15-30deg and 30-60deg according to your project requirement. TT series product have the innovative aluminum rail, D-module, clamps and legs which can be pre-assembled to make the installation easy and quick for significant savings of labor cost. Besides, the customized length of rail will not require onsite welding and cutting to maintain the appearance entirely, structural strength and ensure anti-corrosive performance.

## Adjustable Tilt System



| Item No.      | Description           |
|---------------|-----------------------|
| TT-AD-FL      | AD Front Leg          |
| TT-AD-RL10/15 | AD Rear Leg 10/15 deg |
| TT-AD-RL15/30 | AD Rear Leg 15/30 deg |
| TT-AD-RL30/60 | AD Rear Leg 30/60 deg |

### Benefits

#### Easy Installation

D-module can be installed onto our TT Rail from any position. Systems can be pre-assembled at our factory to save your installtime on-site.

#### Flexibility and Compatible

TT Rail and its accessories can be installed with most type of solar panels under different conditions.

#### Safety and Reliability

The racking systems can withstand various weather conditions and are complied with the A1S/NZS 170 and other international structure load standards. The main support components have also been tested to guarantee its structural stability and weight and wind load capacities.

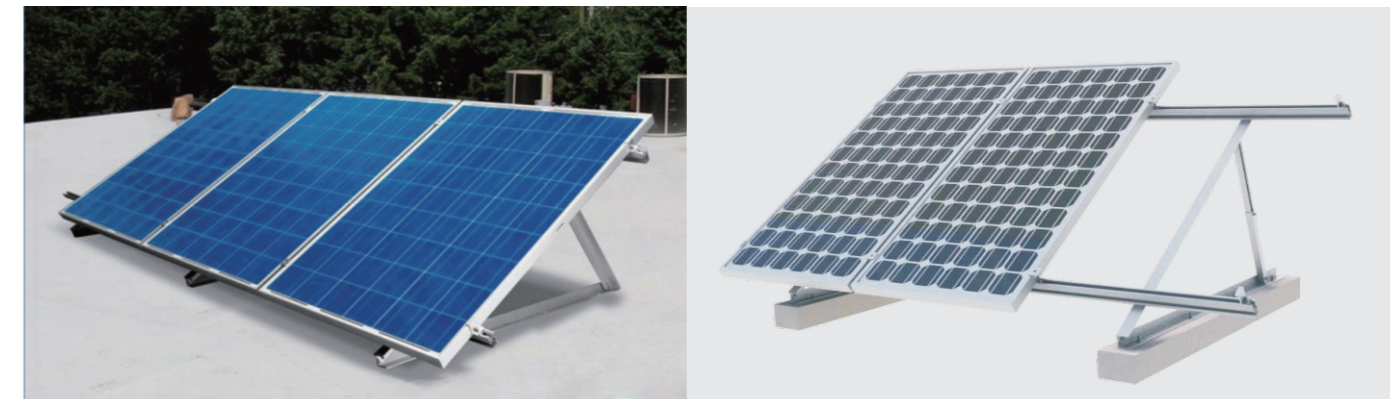
### Technical Information

|                 |                                  |
|-----------------|----------------------------------|
| Install Site    | Low profile roof or open field   |
| Tilt Angle      | 10deg ~ 60deg                    |
| Building Height | up to 20m                        |
| Max Wind Speed  | up to 60m/s                      |
| Snow Load       | up to 1.4KN/m <sup>2</sup>       |
| Standards       | AS/NZS 1170 & DIN 1055 & Other   |
| Material        | Aluminum alloy & Stainless steel |
| Color           | Natural                          |
| Anti-corrosive  | Anodized                         |
| Warranty        | 10 years warranty                |
| Duration        | More than 20 years               |

## Introduction

TT Flat Roof Racking system is developed to mount solar module in a certain tilt angle on a flat roof or ground. You can have the fixed or adjustable angle solution of 10-15deg, 15-30deg and 30-60deg according to your project requirement. TT series product have the innovative aluminum rail, D-module, clamps and legs which can be pre-assembled to make the installation easy and quick for significant savings of labor cost. Besides, the customized length of rail will not require onsite welding and cutting to maintain the appearance entirely, structural strength and ensure anti-corrosive performance.

## Fold Tri-Bracket System



Fixed System

Adjustable System

### Benefits

#### Easy Installation

D-module can be installed onto our TT Rail from any position. Systems can be pre-assembled at our factory to save your installtime on-site.

#### Flexibility and Compatible

TT Rail and its accessories can be installed with most type of solar panels under different conditions.

#### Safety and Reliability

The racking systems can withstand various weather conditions and are complied with the A1S/NZS 170 and other international structure load standards. The main support components have also been tested to guarantee its structural stability and weight and wind load capacities.

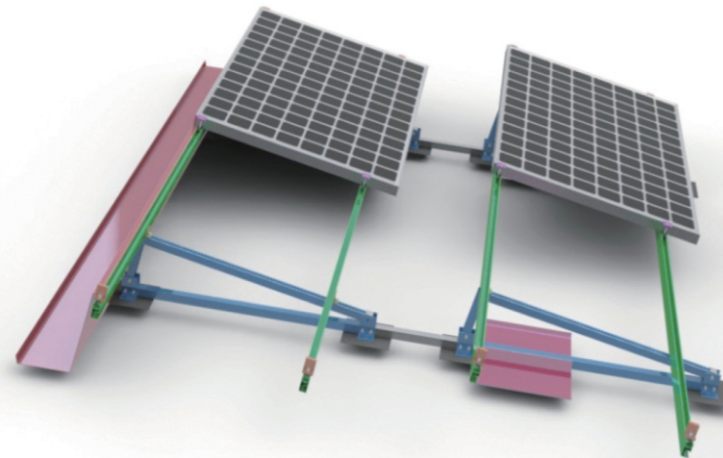
### Technical Information

|                 |                                  |
|-----------------|----------------------------------|
| Install Site    | Low profile roof or open field   |
| Tilt Angle      | 10deg ~ 60deg                    |
| Building Height | up to 20m                        |
| Max Wind Speed  | up to 60m/s                      |
| Snow Load       | up to 1.4KN/m <sup>2</sup>       |
| Standards       | AS/NZS 1170 & DIN 1055 & Other   |
| Material        | Aluminum alloy & Stainless steel |
| Color           | Natural                          |
| Anti-corrosive  | Anodized                         |
| Warranty        | 10 years warranty                |
| Duration        | More than 20 years               |



## Introduction

TT Ballasted Mounting System is a highly engineered solution that secures the array without damaging the flat roof. It is compatible with the usual framed modules and typically does not require roof penetration. Made of light weight and strong aluminum construction, the TT ballasted solution components are pre-assembled and trimmed to prevent corrosion and save your installation time and labor cost.



### Benefits

#### Easy Installation

D-module can be installed onto our TT Rail from any position. Systems can be pre-assembled at our factory to save your installtime on-site.

#### Flexibility and Compatible

TT Rail and its accessories can be installed with most type of solar panels under different conditions.

#### Safety and Reliability

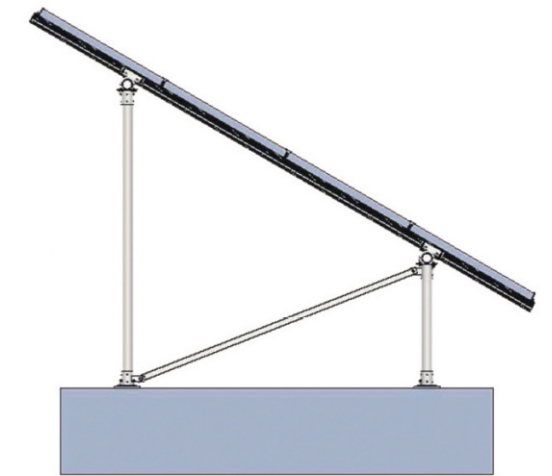
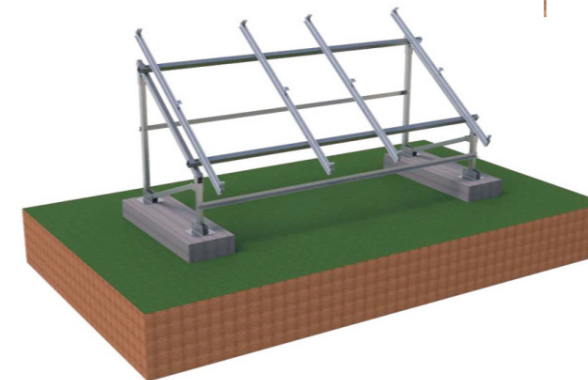
The racking systems can withstand various weather conditions and are complied with the A1S/NZS 170 and other international structure load standards. The main support components have also been tested to guarantee its structural stability and weight and wind load capacities.

### Technical Information

|                        |                                 |
|------------------------|---------------------------------|
| <b>Install Site</b>    | Low profile roof or open field  |
| <b>Tilt Angle</b>      | 10deg, 15deg, 20deg             |
| <b>Building Height</b> | up to 20m                       |
| <b>Max Wind Speed</b>  | up to 60m/s                     |
| <b>Snow Load</b>       | up to 1.4KN/m <sup>2</sup>      |
| <b>Standards</b>       | AS/NZS 1170 & DIN 1055 & Other  |
| <b>Material</b>        | Aluminum Alloy & StainlessSteel |
| <b>Color</b>           | Natural                         |
| <b>Anti-corrosive</b>  | Anodized                        |
| <b>Warranty</b>        | 10 years warranty               |
| <b>Duration</b>        | More than 20 years              |

## Introduction

TT AL-Ground Mounting System is made of 100% aluminum for mounting on concrete strip foundations or ground screws. It is featured with light weight, strong structure, and recyclable material. With TT AL-Ground Mounting System, Beam, legs and rails are manufactured and pre-assembled in the factory avoid welding and cutting onsite to save installation cost. Our mission is to simplify your installation and ensure the structure safety.



### Benefits

#### Easy Installation

Parts have been pre-assembled at factory to save your installation time.

#### Safety and Reliability

The structure is designed and tested strictly against the extreme weather simulations.

#### Flexibility and Adjustable

Smart design reduces the difficulty of the installation on most condition.

#### 10 Years Warranty

Titanergy provides a 10-years warranty for the material and structure.

### Technical Information

|                           |  |
|---------------------------|--|
| <b>Install Site</b>       | Open Field                                     |
| <b>Max Wind Speed</b>     | up to 60m/s                                    |
| <b>Snow Load</b>          | up to 1.4KN/m <sup>2</sup>                     |
| <b>Module Type</b>        | Framed or Frameless                            |
| <b>Module Orientation</b> | Portrait                                       |
| <b>Main Material</b>      | Anodized Aluminum                              |
| <b>Fasten Material</b>    | Stainless Steel                                |
| <b>Foundation</b>         | Concrete With Pre-Buried Bolts<br>Ground Screw |

## Introduction

TT C-Steel Mounting System is applicable for solar photovoltaic systems on open fields. The steadiness and safety of this system is compatible with the international structural mechanics and construction standards. The system can be modified to suit different foundation solutions, such as concrete with pre-buried bolt, direct buried and ground screws. Material used include hot galvanized steel and anodized aluminum alloy, with anti-corrosive coating suitable for outdoor application. As per practical requirements, the system is able to be planned and customized at the factory to avoid welding and cutting onsite.



Ground Screw Foundation

### Benefits

#### Easy Installation

Engineered and assembled at the factory to save your time and cost.

#### Steady and Safety

Our systems are designed in accordance to the international structural mechanics and construction standards.

#### Excellent Duration

All raw materials are coated with high quality anti-corrosion protection.

#### Great Flexibility

With our mounting system, ground mount solar arrays can be planned on a per kilowatt or megawatt cluster basis.

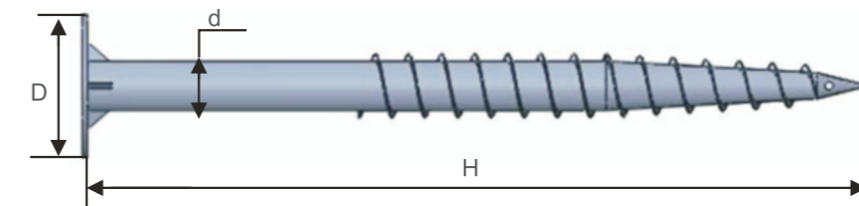
### Technical Information

|                        |                                |
|------------------------|--------------------------------|
| <b>Install Site</b>    | Open Field                     |
| <b>Tilt Angle</b>      | 10deg ~ 60deg                  |
| <b>Building Height</b> | up to 20m                      |
| <b>Max Wind Speed</b>  | up to 60m/s                    |
| <b>Snow Load</b>       | up to 1.4KN/m <sup>2</sup>     |
| <b>Standards</b>       | AS/NZS 1170 & DIN 1055 & Other |
| <b>Main Material</b>   | Galvanized Steel               |
| <b>Color</b>           | Natural                        |
| <b>Anti-corrosive</b>  | Hot Galvanized                 |
| <b>Warranty</b>        | 10 years warranty              |
| <b>Duration</b>        | More than 20 years             |

## GROUND SCREW

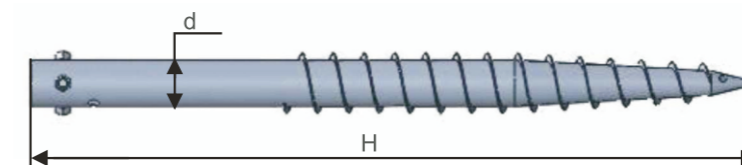
### Ground Screw with Flange Plate

| Item No.     | D(mm) | d(mm) | H(mm) |
|--------------|-------|-------|-------|
| TT-GS-F-1200 | 220   | 76    | 1200  |
| TT-GS-F-1600 | 220   | 76    | 1600  |
| TT-GS-F-2000 | 220   | 76    | 2000  |
| TT-GS-F-2400 | 220   | 76    | 2400  |



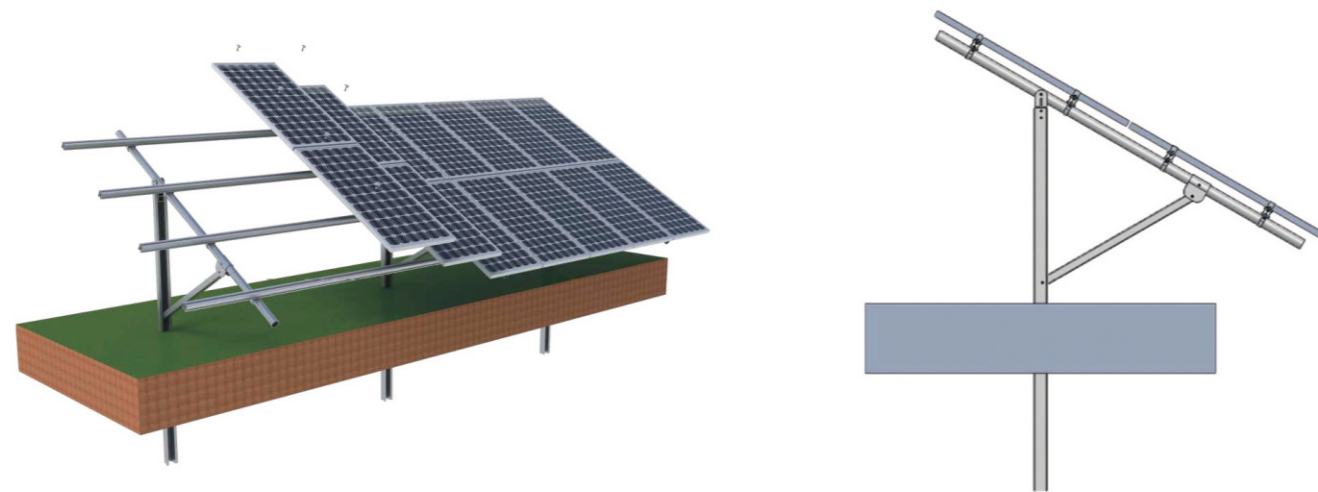
### Ground Screw without Flange Plate

| Item No.     | d(mm) | H(mm) |
|--------------|-------|-------|
| TT-GS-1200   | 76    | 1200  |
| TT-GS-1600   | 76    | 1600  |
| TT-GS-F-2000 | 76    | 2000  |
| TT-GS-F-2400 | 76    | 2400  |



## Introduction

TT Pile Ground System is designed for large scale commercial and utility PV systems on non-soil ground, suitable for both framed and frameless module installation. Open Post can be pile into the ground 1-2 meters by piling machine quickly, then Al-Beam structure and B-Rail with clamps can be easily mounted onto the system. Our mission is to simplify your installation and ensure the structure safety.



### Benefits

#### Easy Installation

Parts have been pre-assembled at factory to save your installation time.

#### Safety and Reliability

The structure is designed and tested strictly against the extreme weather simulations.

#### Flexibility and Adjustable

Smart design reduces the difficulty of the installation in most conditions.

#### 10 Years Warranty

Titanergy provides a 10-years warranty for the material and structure.

### Technical Information

|                    |                                 |
|--------------------|---------------------------------|
| Install Site       | Open Field                      |
| Max Wind Speed     | up to 60m/s                     |
| Snow Load          | up to 1.4KN/m <sup>2</sup>      |
| Module Type        | Framed or Frameless             |
| Module Orientation | Portrait                        |
| Rail Material      | Anodized Aluminum               |
| Post Material      | Hot-dip Galvanized Steel        |
| Adjustability      | Post Height Deviation: 10mm     |
|                    | Post Angle Deviation: 2°        |
|                    | Post Verticality Deviation: 2°  |
|                    | Pile Driving Depth: 1000~2000mm |
| Soil Condition     | Non-Sandy                       |

## Introduction

TT Pole Mount System is designed to install solar panels on a single pole. According to different conditions, several kinds of solutions are available. TT Pole Mount System takes the importance of safety and duration. The systems have been engineered and tested to comply with the structural mechanics standards. Material used include hot galvanized steel and anodized aluminum alloy, with high quality anti-corrosive coating suitable for outdoor applications.



### Benefits

#### Easy Installation

Integrated Design with the support pole to minimize time and cost of installation.

#### Steady and Safety

Designed and tested in according to the structural mechanics and construction standards.

#### Excellence Duration

All the material selected have high quality anti-corrosion protection.

#### Great Flexibility

Tilt angle can be adjusted according to the actual criteria quality for the projects.

|                 |                            |
|-----------------|----------------------------|
| Install         | Open Field                 |
| Tilt Angle      | 10deg~60deg                |
| Building Height | 20 meters                  |
| Max Wind Speed  | Up to 60m/s                |
| Max Snow Load   | up to 1.4KN/m <sup>2</sup> |
| Standard        | AS/NZS1170 and other       |
| Post Material   | Galvanized Steel           |
| Rail Steel      | Anodized Aluminum          |
| Warranty10      | 10 Years Warranty          |

# PROJECT CASES



# PROJECT CASES

